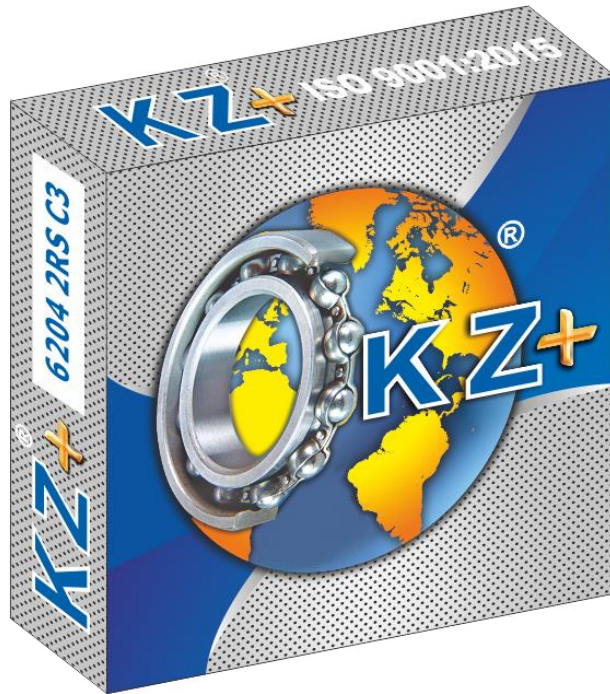


**KG BEARING INDIA LLP**  
*Excellence in motion*



WORLDWIDE EXPORTER OF  
**BEARINGS**



[www.kgbearing.com](http://www.kgbearing.com)

# About Us

**KG Bearing India LLP** is a fast growing company based in India. It was created by a team of professionals with more than 40 years of experience in the bearing industry.

We pride ourselves on sharing the product knowledge, application expertise, and consistent, reliable service that our customers have come to expect.

KZ bearings are manufactured according to international ISO/DIN/ANSI standards under our quality control systems. KZ bearings are 100% tested and then exported to customers globally.

## Core values

- Customer Focused
- Innovation
- Integrity and Ethics
- Teamwork
- Growth and Learning

## Company Mission

Help customers by sharing our knowledge and experience in the bearing industry and provide them with reliable bearings at an affordable price.

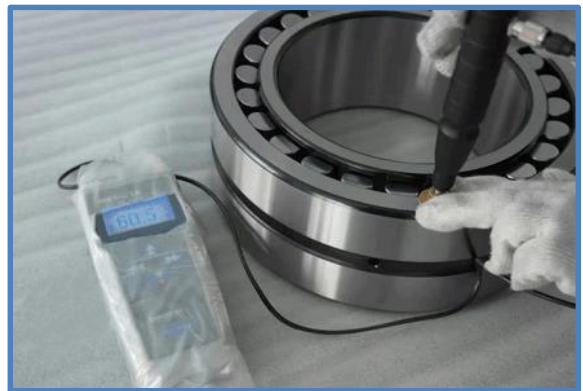
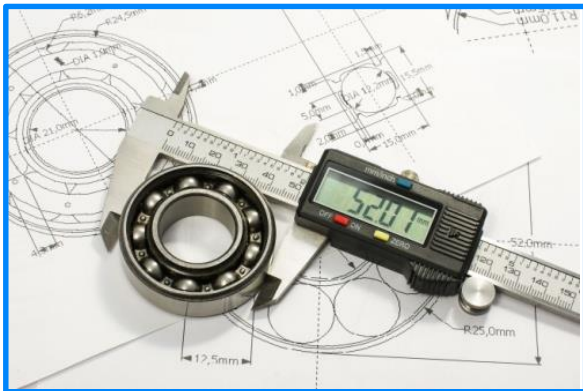
## Company Vision

To become a global leader in motion & drives industry.

# Quality Standards

**KG BEARING INDIA LLP** is an **ISO 9001:2015** certified company. We have well-established quality control laboratory that controls the following parameters with the help of advanced instruments:

- Dimensional Tolerance
- Run out and geometrical tolerance
- Radial clearance
- Axial clearance
- Noise of bearings
- Vibration of bearings
- Roughness checking
- Roundness checking
- Hardness checking with portable tester



## QUALITY POLICY

- Strategic management of our Organization.
- Consistently meeting customer requirement.
- Continuous improvement of our processes.

## QUALITY OBJECTIVES

- Maintain improving trends of customer satisfaction.
- Continual improvement of quality control and quality assurance system.
- Continual improvement in 'on-time delivery' of products, as per customer requirements.

# Certifications



# CERTIFICATE

This is to certify that the  
QUALITY MANAGEMENT SYSTEMS  
of

## KG BEARING INDIA LLP

10th Floor, Tower 1, HD- 046, Seawoods Grand Central, Sector 40,  
Nerul Node, Navi Mumbai, Thane- 400706, Maharashtra, India

has been assessed and found to be in conformance to the requirements of

## ISO 9001:2015

This certificate is valid for the following activity:

Manufacturer and Exporter of Industrial,  
Automotive and Agriculture Bearings

Certificate No.: IQ-23111804

Date of initial Registration

18-11-2023

Date of this Certificate

18-11-2023

Certificate Expiry

18-11-2024\*

Recertification Due

18-11-2025

Auth Sign

\*Registration is subject to the system being continually maintained to the above standard under regular surveillance.  
To check the certification validity please visit- <https://www.iafcertsearch.org/> or [www.isplcert.com](http://www.isplcert.com)



## Indraprastha SystemCert Pvt. Ltd.

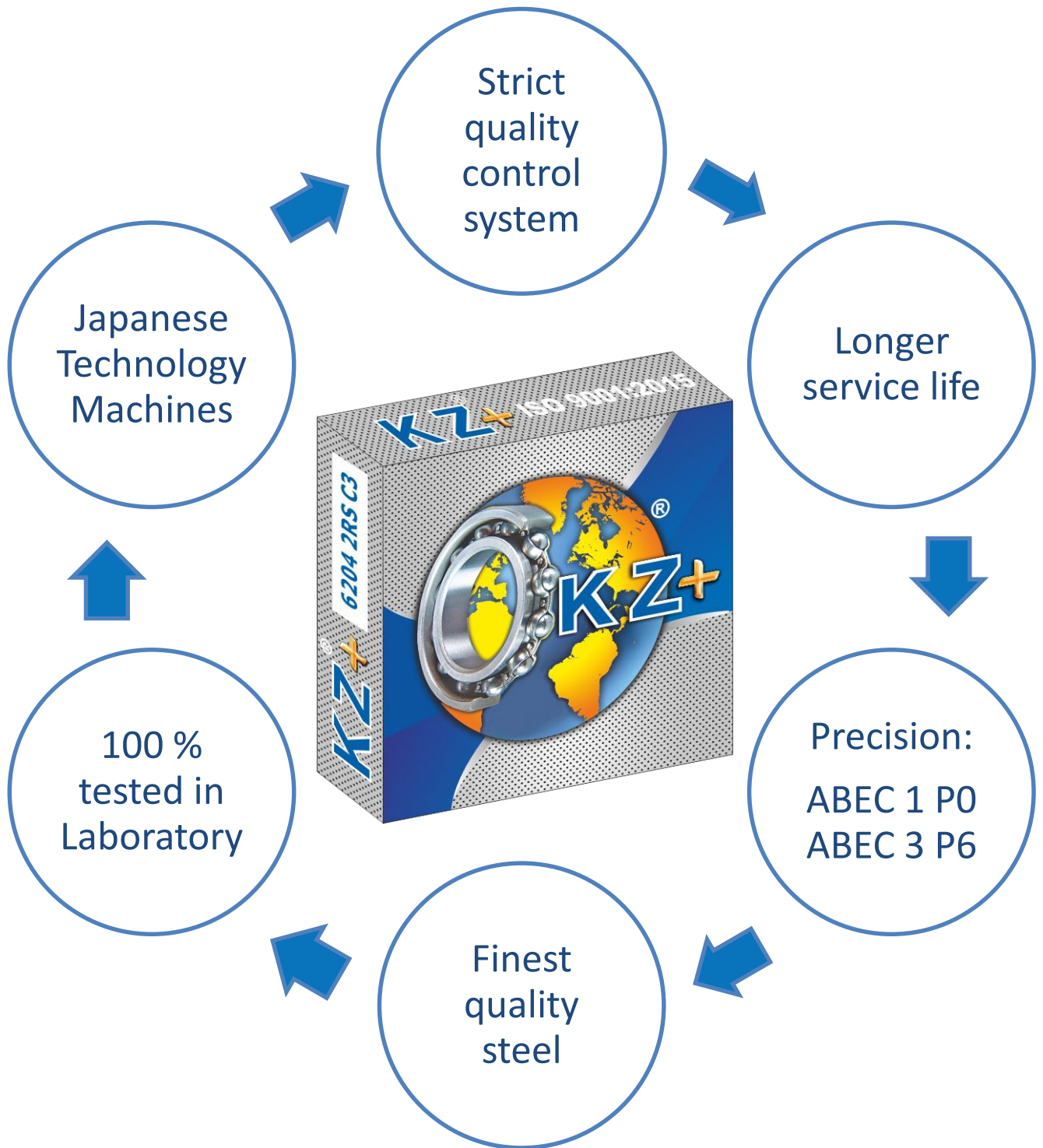
Accredited by EGAC, A Member of International Accreditation Forum

For updated information of Certification, visit- [www.isplcert.com](http://www.isplcert.com), or E Mail: [info@isplcert.com](mailto:info@isplcert.com)

201, Jaina Tower-3, A-1, Janak Puri, New Delhi-110058, India, Ph +91 9990 477 631



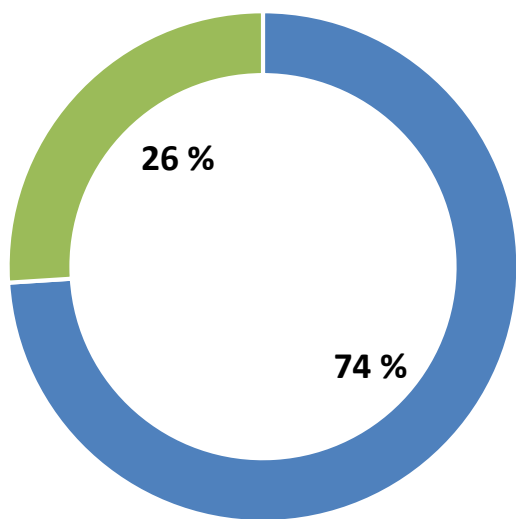
# Brand Identity



# Global Presence

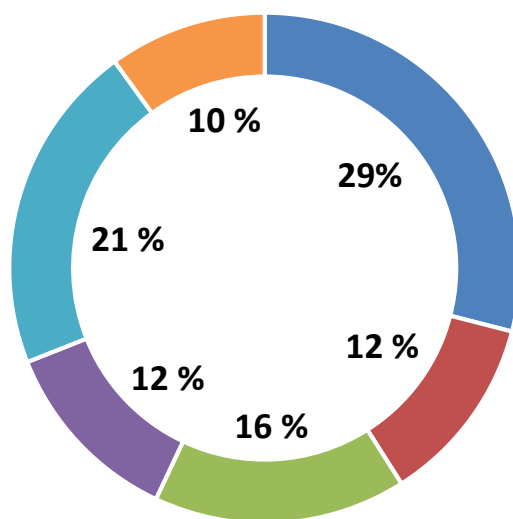


## Sales Structure



■ Export Sales ■ Local Sales

## Export Market



■ Europe ■ USA ■ Asia  
 ■ Middle East ■ South America ■ Others

## DEEP GROOVE



- 6700,6800,6900,1601,16001
  - 6000,6200,6300,6400
  - 4200,4300
  - 62200,62300,63200,63300
- SEALS: OPEN, ZZ, 2RS

## MINIATURE



- 602,623,634,672,681,691
- SEALS: OPEN, ZZ, 2RS

## THRUST



- 51100,51200,51300,51400
  - 52200,52300,52400
  - 53200,53300,53400
  - 54200,54300,54400
- CAGE: STEEL, BRASS

## ANGULAR CONTACT



- 7000,7200,7300,7800,7900
  - 3200,3300,5200,5300
- CAGE: STEEL, NYLON, BRASS

## TAPERED



- 30200,30300,31300
- 32000,32200,32300, 32900
- 33000,33100,33200

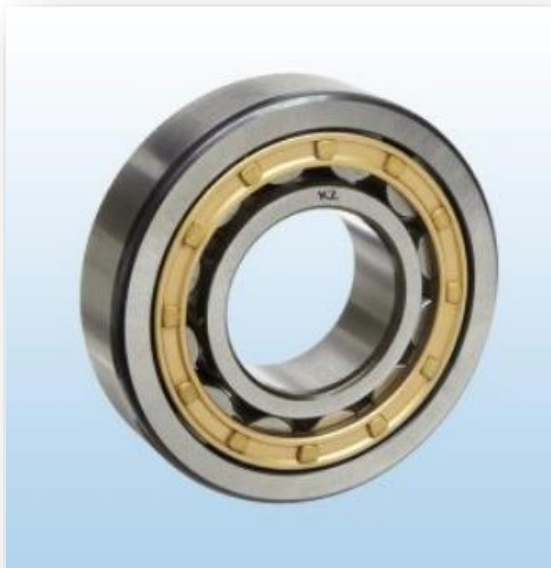
ALSO IN INCH SIZES

## SPHERICAL



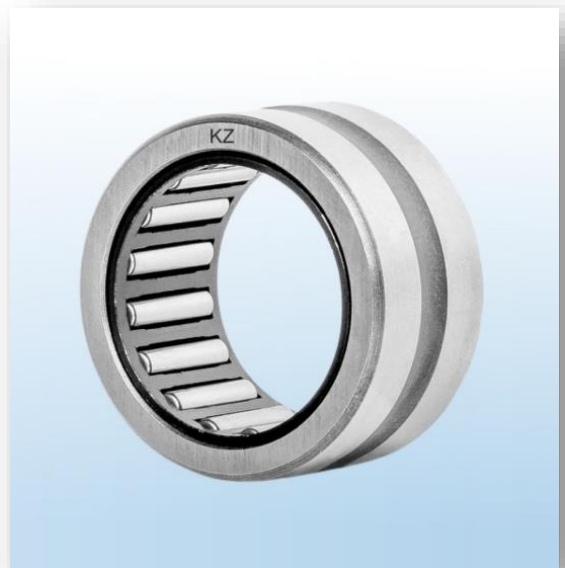
- 21300,22200,22300
  - 23000,23100,23200
  - 24000,24100
- PLAIN AND TAPER BORE  
CAGE: CC,CA,MB,E,E1

## CYLINDRICAL



- N, NJ, NU, NUP, NF
  - NN, NNU
- (1000,200,300,400,2200,2300)  
CAGE: STEEL, BRASS

## NEEDLE



- NA69, NA49, HK, K, NK, NKI, NKIS, NKS, RNA, HF, AXK



## ROD ENDS



- PHS, PHSA, PHSB, PHS EC
- POS, POSB, POS EC

## SPHERICAL PLAIN



- GE, GEG, GEH, GEZ, GEK
- SEALS: OPEN, 2RS

## SELF ALIGNING



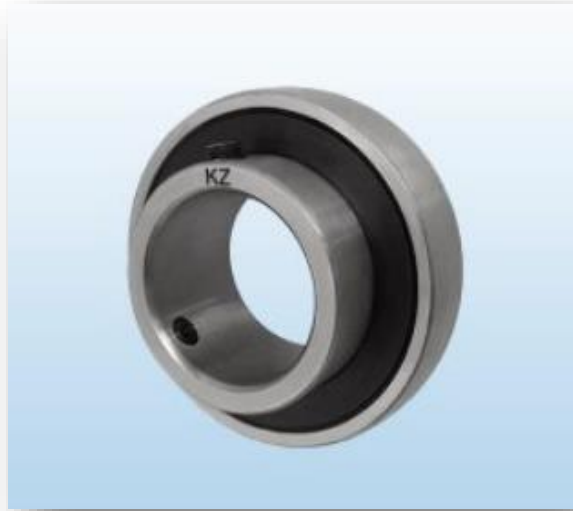
- 1200,1300, 2200,2300
  - 11200,11300
- PLAIN AND TAPER BORE

## LINEAR BUSHING



- LM, LME, LMB, LMS, LK, LMG, LBE, LBD, LBB

## INSERT BEARING



- UC, UK, SA, SB (200,300)  
METRIC AND INCH SIZE  
CHROME AND STAINLESS STEEL

## PLUMMER BLOCK



- SN, SD, SNL, SNU  
( 200, 300, 500, 3000 )

## BEARING UNITS



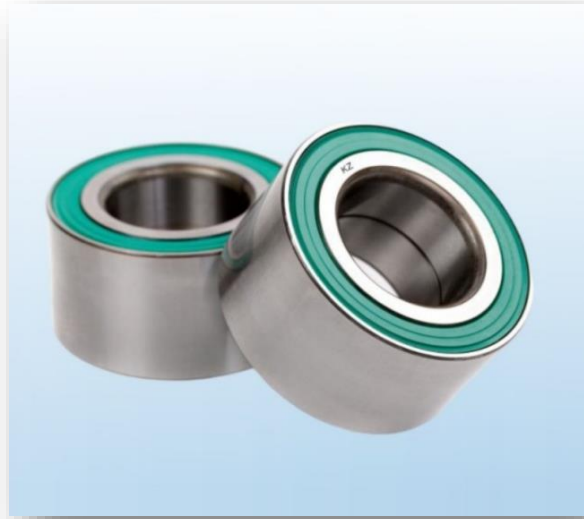
- UCP/F/FL/FC/T/PA/PH/FA/FB/HA (200,300)  
MATERIAL - CAST IRON, PRESSED STEEL,  
THERMOPLASTIC  
METRIC AND INCH SIZES

## ADAPTER SLEEVES



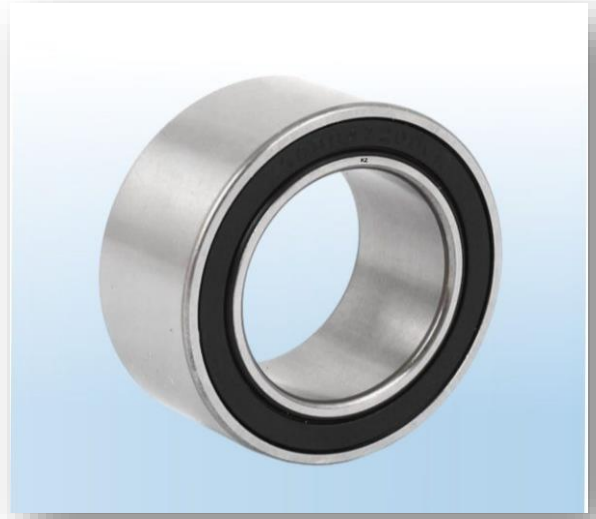
- H, HE, HA, HS  
(200,300,2300,3000,3100)

## CAR WHEEL BEARING

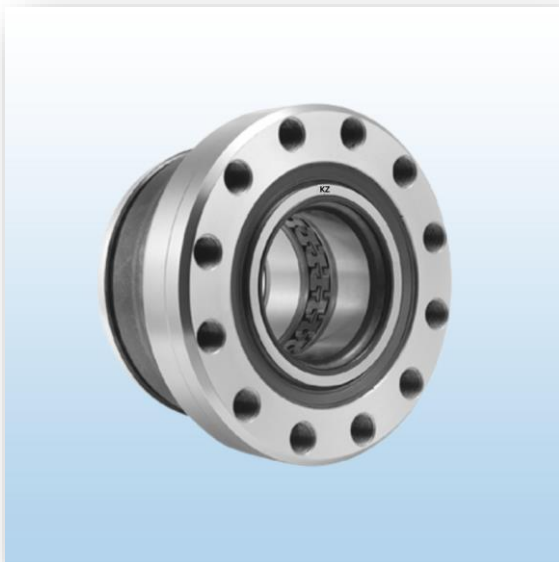


DAC (Ball type), DU (Roller type)  
SEALS: 2RS, ZZ, ABS

## AIR CONDITIONER BEARING



## TRUCK BEARING



MAN, SCANIA, VOLVO, DAF,  
MERCEDES

## CLUTCH RELEASE



# Contact Us

Our team will be happy to assist you for all your queries.  
Kindly get in touch with us.



DELHI | MUMBAI | SINGAPORE



[sales@kgbearing.com](mailto:sales@kgbearing.com)  
[tanya@kgbearing.com](mailto:tanya@kgbearing.com)



+91 7303106007  
+91 9971701767



[kgballbearing](#)



kgbearingindia



[www.kgbearing.com](http://www.kgbearing.com)